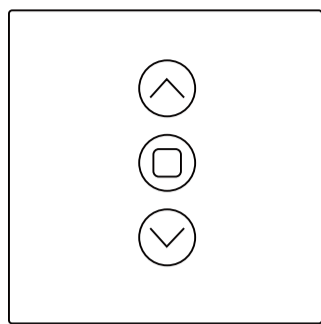


Instruction Manual Smart Curtain Switch

Wi-Fi+RF



English



- Bitte scannen Sie den QR-Code, um das deutsche Handbuch, das Installationsvideo und die Funktionseinführung zu erhalten
- Escanee el código QR para obtener el manual en español, el vídeo de instalación y la introducción de la función
- Veuillez scanner le code QR pour obtenir le manuel en français, la vidéo d'installation et l'introduction des fonctions
- Отсканируйте QR-код, чтобы получить руководство на русском языке, видео по установке и описание функций
- Leia o código QR para obter o manual em português, o vídeo de instalação e a introdução das funções



请扫描二维码获取中文说明书、安装视频及功能介绍

Product Description

This new designed glass panel wireless touch smart curtain switch is designed with many new updates. The WiFi+RF version easily replaces traditional switches with a variety of ways to control. Multi-control association is added into Tuya Smart Life App as a new feature to control with other smart switches, together with the backlight on/off and relay status when power off. Its scratch resistance glass panel is suitable for different decoration styles with its best value.

Transportation:

The products shall be free from severe vibration, impact, exposure to rain, dumping and other problems during transportation, and shall comply with the provisions of the marks on the packing boxes.

Safety Information:

1. Risk of Electric Shock: Electricity can cause personal injury and property damage if handled improperly. If you are not sure about any part of these instructions, please seek professional assistance from a qualified Electrician.
2. Do not disassemble, reassemble, modify, or attempt to repair the product by yourself.
3. This product has no waterproof and dustproof function.

Storage:

Products should be put in the warehouse where the temperature is between the range -10°C ~ +45°C, and the relative humidity <=70%RH, indoor environment with no acid, alkali, salt and corrosive, explosive gas, flammable matter, protected from dust, rain and snow.

Technical Parameters:

Model: WS-USR-C / WS-EUR-C
Working Voltage: 90-250V AC, 50/60Hz
Max. Current: 2.5A/Gang; Total 2.5A
Load Power: <=600W
Standby Power: <=0.5W
Wireless Protocol: Wi-Fi 2.4GHz IEEE 802.11 b/g/n
Standby Consumption: 0.1mA
Wireless Range: 30 Meters(Indoor)

Warnings:

Turn off the power at the circuit breaker and test that power is off before wiring.

Installation

Note:

- Make sure that the power at the circuit breaker is off before wiring.
- Neutral Wire is required. Confirm the wall box contains a Neutral Wire (typically white). If the wall box don't have a Neutral Wire, please try another location at your home or call a professional electrician to install the switch.
- The wire colors indicated in this manual are the usual colors and may differ in some houses.
- Ensure the wire conductors are securely fastened to each wire.
- Ensure the Wi-Fi signal is steady and normally working before wiring.
- If you don't have any wiring experience, please call a professional electrician.

Step 1

- Turn off the circuit breaker and use the electrical tester to test the power.
- Ensure the circuit breaker is off before wiring.

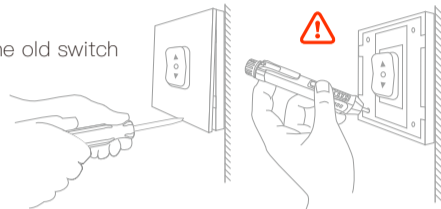


Attention:

Please disconnect the power supply before installing or removing the device for avoiding irreversible damage on the device from the electric current or some unpredictable problems such as lamp flashing.

Step 2

- Remove the old switch



Step 3

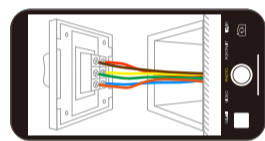
- Remove the switch and pull it away from the wall. Identify Line/Load Wire (Note: The color of your wire may be different from the color shown on the manual.)

Verify power is off

- We recommend you remove the faceplate from the old switch and use an electrical tester to test all wires connected to the switch to ensure there is no voltage in the circuit.
- You may need to turn off more than one circuit breaker.

Step 4

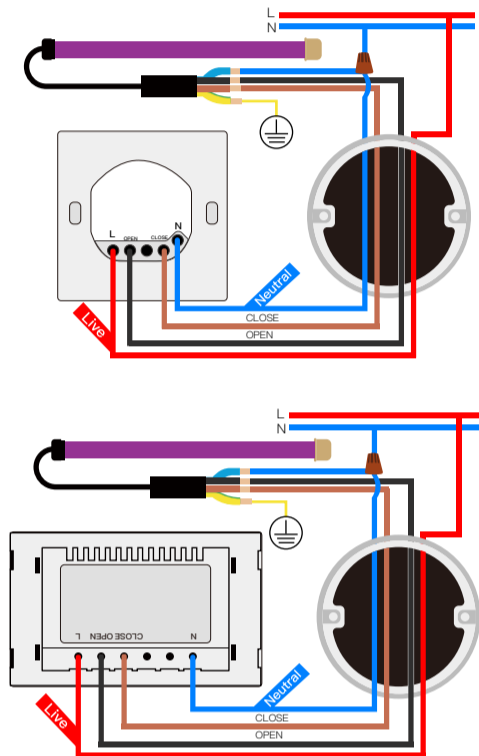
- Take pictures of the wiring



- Follow the wiring diagram to connect the switch wires to the wires in the wall box with the wire conductors.

English

1

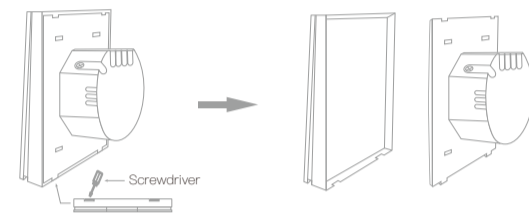


2

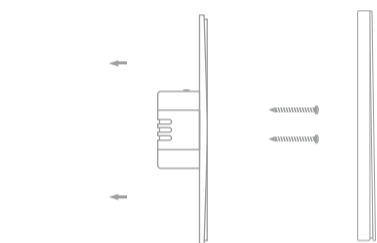
English

Step 5

- Open the switch panel from the bottom of the switch with a screwdriver



- Mount the switch with the provided screws and snap the wall plate on it.



Step 6

Turn the power back on at the circuit breaker and then switch the light on.

English

3

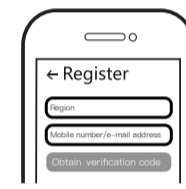
Preparation For Use

1. Download MOES App on App store or scan the QR code



MOES App is upgraded as much more compatibility than Tuya Smart/Smart Life App, functional well for scene controlled by Siri, widget and scene recommendations as the fully new customized service. (Note: Tuya Smart/Smart Life App still works, but MOES App is highly recommended)

2. Registration or Log in



- Download "MOES" Application.
- Enter the Register/Login interface; tap "Register" to create an account by entering your phone number to get verification code and "Set password". Choose "Log in" if you already have a MOES account.

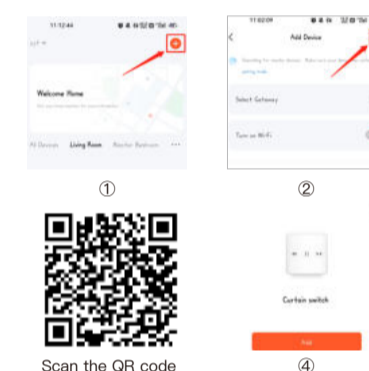
Steps for connecting the APP to the device

Method One:

1. Make sure your phone is connected to Wi-Fi and Bluetooth.



2. Scan the QR code to configure the network guide.



English

5

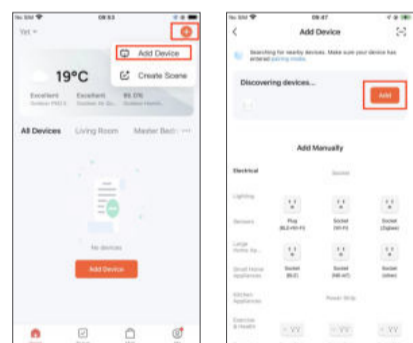
Method Two:

1. Make sure your phone is connected to Wi-Fi and Bluetooth.



2. Reset: Press the switch button for 6 times, and hold on the 6th time, then release until the blue indicator on the switch flashes fast. Pair/Reset is successful.

3. Open the MOES App, click the "+" in the upper right corner, enter "Add Device", the device will appear in "discovering devices", click "Add"

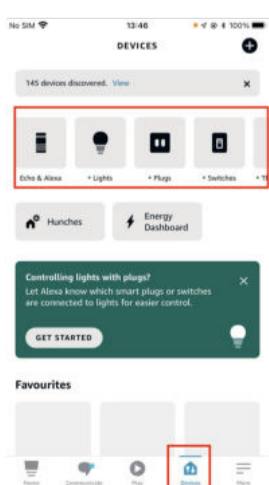


English

English

10

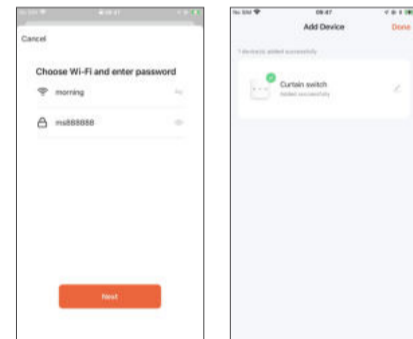
7. In the Smart Home page, you can group your devices in different categories. Your MOES APP has now been paired with Alexa. Now you can control your Smart star projector through Alexa.



How to connect Smart star projector to Google Home

1. Launch the Google Home App and make sure Google Home speaker is installed. If not, please follow Google Home speaker installation instruction to complete the installation.

4. Enter Wi-Fi Password and click "Next", waiting for completing the connection. Add the device successfully, you can edit the name of the device to enter the device page by click "Done".



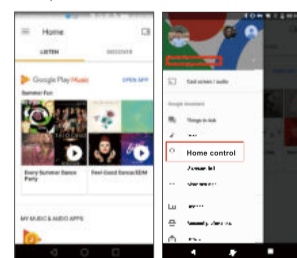
5. Enjoy your smart life with home automation.



English

11

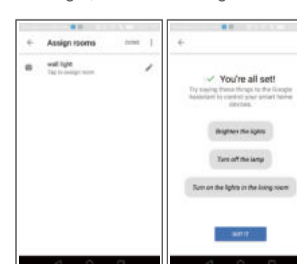
2. Once Google Home is installed, in the upper left corner of App Home page, Pressing the button to show App menu. Then press "Home Control" in the menu.



3. After successfully linking your account, in the Google Home App you can see all your smart devices from your MOES App account. You can assign rooms for each device.

4. Now you can use Google Home to control your smart device, you can say like.

Ok Google, turn on/off wall light
Ok Google, set bedroom light to



English

16

SERVICE

Thank you for your trust and support to our products, we will provide you with a two-year worry-free after-sales service (freight is not included), please do not alter this warranty service card, to safeguard your legitimate rights and interests. If you need service or have any questions, please consult the distributor or contact us.

Product quality problems occur within 24 months from the date of receipt, please prepare the product and the packaging, applying for after-sales maintenance in the site or store where you purchase; If the product is damaged due to personal reasons, a certain amount of maintenance fee shall be charged for repair.

We have the right to refuse to provide warranty service if:

1. Products with damaged appearance, missing LOGO or beyond the service term
2. Products that are disassembled, injured, privately repaired, modified or have missing parts
3. The circuit is burned or the data cable or power interface is damaged
4. Products damaged by foreign matter intrusion (including but not limited to various forms of fluid, sand, dust, soot, etc.)

RECYCLING INFORMATION

All products marked with the symbol for separate collection of waste electrical and electronic equipment (WEEE Directive 2012/19 / EU) must be disposed of separately from unsorted municipal waste. To protect your health and the environment, this equipment must be disposed of at designated collection points for electrical and electronic equipment designated by the government or local authorities. Correct disposal and recycling will help prevent potential negative consequences for the environment and human health. To find out where these collection points are and how they work, contact the installer or your local authority.



English

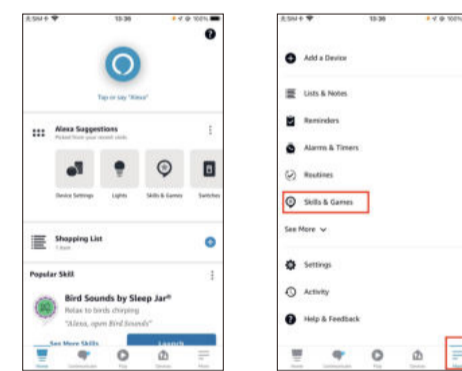
17

How to connect Smart Star Projector to Amazon Alexa.

1. Launch MOES App, sign into your account and make sure Smart star projector is on the device list

2. Minimize MOES App, then launch the Alexa App and sign in your Alexa account and make sure you have at least one Alexa smart speaker-controlled device installed like Echo dot, etc.

3. In the upper left corner of Home page, press the button to show APP Menu. Then select Skills in the menu.



4. Type in "MOES" in the search and press the search button next to it.

English

13

WARRANTY CARD

Product Information

Product Name _____
Product Type _____
Purchase date _____
Warranty Period _____
Dealer Information _____
Customer's Name _____
Customer Phone _____
Customer Address _____

Maintenance Records

Failure date	Cause Of Issue	Fault Content	Principal

Thank you for your support and purchase at we Moes, we are always here for your complete satisfaction, just feel free to share your great shopping experience with us.



If you have any other need, please do not hesitate to contact us first, we will try to meet your demand.

FOLLOW US

f @moessmart t @moes_smart y MOES.Official
@moes_smart @moes_smart www.moes.net

AMZLAB GmbH
Laubenhof 23, 45326 Essen
Made in China

EVATOST CONSULTING LTD
Address: Suite 11, First Floor, Moy Road Business Centre, Taffs Well, Cardiff, Wales, CF15 7QR
Tel: +44-292-1680945
Email: contact@evatmaster.com

Manufacturer:
WENZHOU NOVA NEW ENERGY CO.,LTD
Address: Power Science and Technology Innovation Center, NO.238, Wei 11 Road, Yueqing Economic Development Zone, Yueqing, Zhejiang, China
Tel: +86-577-57186815
After-sale Service: service@moeshome.com

English

15

English

18

English

19