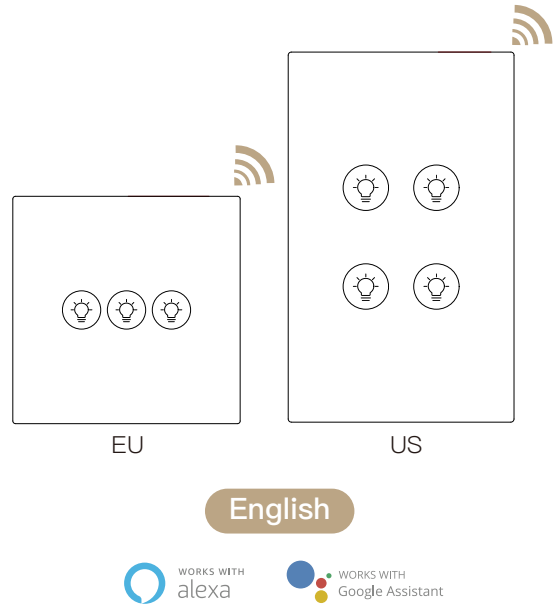


Instruction Manual Dimmable Touch Switch



- Bitte scannen Sie den QR-Code, um das deutsche Handbuch, das Installationsvideo und die Funktionseinführung zu erhalten
- Escanee el código QR para obtener el manual en español, el video de instalación y la introducción de la función
- Veillez scanner le code QR pour obtenir le manuel en français, la vidéo d'installation et l'introduction des fonctions
- Отсканируйте QR-код, чтобы получить руководство на русском языке, видео по установке и описание функций
- Leia o código QR para obter o manual em português, o vídeo de instalação e a introdução das funções



请扫描二维码获取中文的说明书、安装视频及功能介绍

Product Description

This new designed smart switch with 1/2/3 gang optional is designed with Wi-Fi protocol to replace traditional dimmable switches with a variety of ways to control. Wi-Fi hub is required for normal use. Now one new smart feature as multi-control association to other smart switches is added into Smart Life/Tuya App, and all controlling modes work without any interference. Its design is suitable for different decoration styles with its best value.

Safety Information

Risk of Electric Shock: Electricity can cause personal injury and property damage if handled improperly. If you are not sure about any part of these instructions, please seek professional assistance from a qualified electrician.

Technical Parameters:

Model: WS-EU-D;WS-US-D
Working Voltage: 90~250V AC 50/60Hz
Max. Load:
600W(INC)/220V;300W(INC)/110V;
150W(LED/CFL)/220V;75W(LED/CFL)/110V
Protocol: Wi-Fi 2.4GHz
Working Frequency: 2.4G
Wireless Distance(outdoor): 20~30M

Warnings:

Please note that this switch must use a TRIAC dimming driver to adjust the brightness of the LED light!

Installation

Note:

- Make sure that the power at the circuit breaker is off before wiring.
- Neutral Wire is required.Confirm the wall box contains a Neutral Wire(typically white). If the wall box don't have a Neutral Wire, please try another location at your home or call a professional electrician to install the switch.
- The wire colors indicated in this manual are the usual colors and may differ in some houses.
- Ensure the wire conductors are securely fastened to each wire.
- Ensure the Wi-Fi signal is steady and normally working before wiring.
- If you don't have any wiring experience, please call a professional electrician.

Step 1

- Turn off the circuit breaker and use the electrical tester to test the power.
- Ensure the circuit breaker is off before wiring.

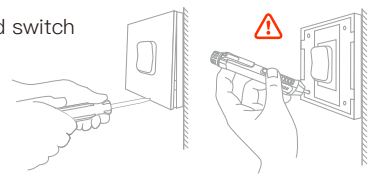


⚠ Attention:

Please disconnect the power supply before installing or removing the device for avoiding irreversible damage on the device from the electric current or some unpredictable problems such as lamp flashing.

Step 2

- Remove the old switch



Step 3

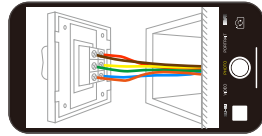
- Remove the switch and pull it away from the wall. Identify Line/Load Wire(Note: The color of your wire may be different from the color shown on the manual.)

⚠ Verify power is off

- We recommend you remove the faceplate from the old switch and use an electrical tester to test all wires connected to the switch to ensure there is no voltage in the circuit.
- You may need to turn off more than one circuit breaker.

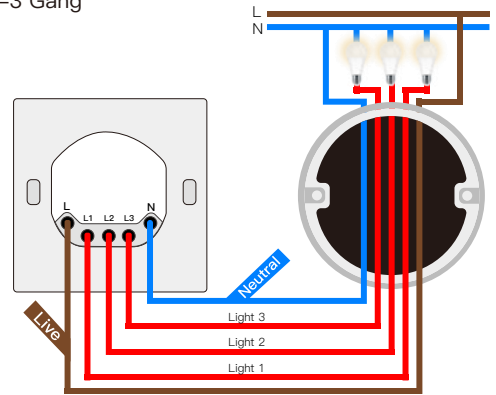
Step 4

- Take pictures of the wiring

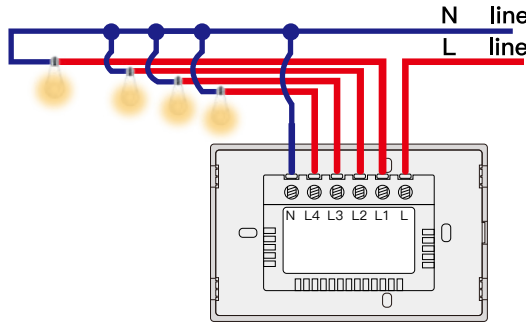
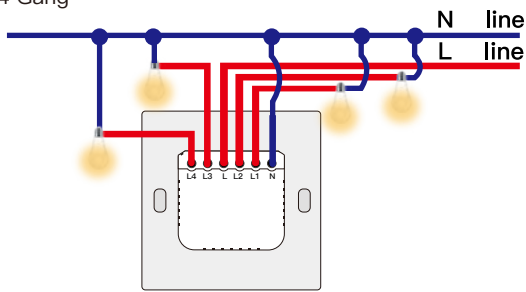


- Follow the wiring diagram to connect the switch wires to the wires in the wall box with the wire conductors.

1-3 Gang

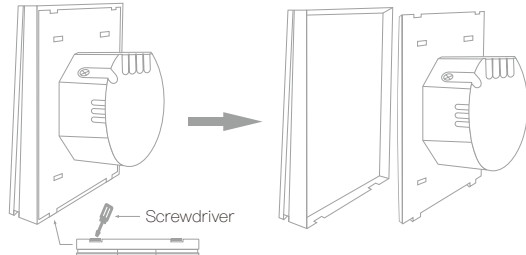


4 Gang

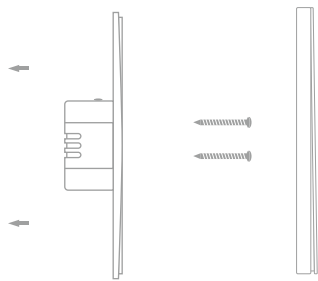


Step 5

- Open the switch panel from the bottom of the switch with a screwdriver



- Mount the switch with the provided screws and snap the wall plate on it.



Step 6

Turn the power back on at the circuit breaker and then switch the light on.

Manual Operation:

Press the button once on the switch and the light will turn on/off slowly. Long press the button and the light will dim up slowly, then release before long pressing again to dim down slowly.

Add Devices

1.Download Smart Life App



Please scan the QR code or download Smart Life on App store.

2.Registration or Log in

- Download "Smart Life" Application
- Enter the Register/Login interface; tap "Register" to create an account by entering your phone number to get verification code and "Set password". Choose "Log in" if you already have a Smart Life account.

3.Configure the APP to the switch

Preparation: Ensure the switch has been connected with electricity; ensure your phone has been connected to Wi-Fi and is able to connect to the internet.

Note:

If you have connected 5G wifi network, please disconnect 5G wifi network firstly and connect 2.4G wifi network.

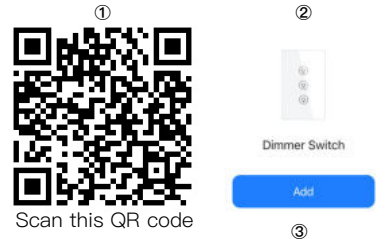
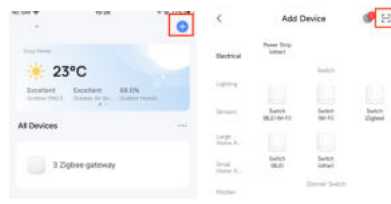
Steps for connecting the APP to the device

Method One:

- Make sure your phone is connected to Wi-Fi and Bluetooth.



- Scan the QR code to configure the network guide.



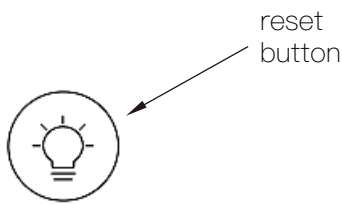
Scan this QR code

Method Two:

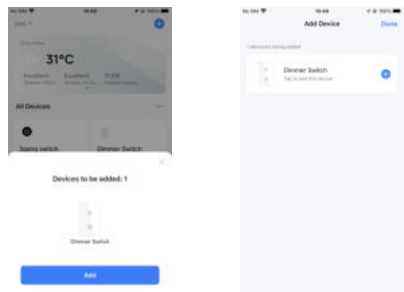
- Make sure your phone is connected to Wi-Fi and Bluetooth.



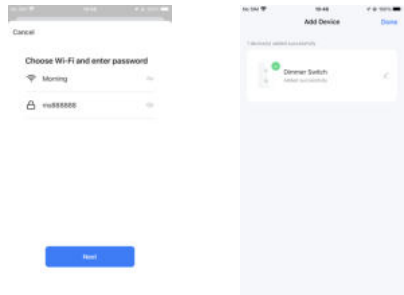
- Reset:Re-pair and clear up the Wi-Fi code Press the switch button for 6 times, and hold on the 6th time, then release until the blue indicator flashing fast.



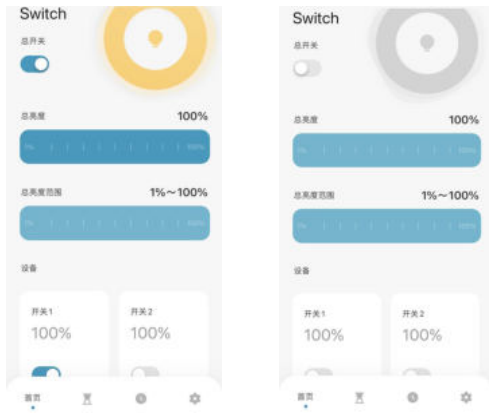
- Open Smart Life/Tuya App, then the prompt page will automatically show on the screen.Click "Add", Select the device you want to add and click "+".



- Enter Wi-Fi Password and click "Next",waiting for completing the connection.Add the device successfully, you can edit the name of the device to enter the device page by click "Done".



- enjoy your smart life with home automation.



Precautions

- Please confirm the load of lamps before installation, we take no responsibility if it is damaged because of over loaded.

- Disclaimer: We take no responsibility for casualty because of improper line connecting. If upgrading the product on software, you can contact with our company, the company reverses the right to interpret the regulation.

Equipment operating instructions

1.How to reset/re-pair Wi-Fi code:

ON/OFF the power button for 6 times and hold on on the 6th time until the indicator light flashes fast for successful pairing/reset.

2.How to ON/OFF manually

Manually "short press" the on/off button to turn on/off the device.

3.How to manually dimmer

- Plug the dimmable bulb onto the smart power Plug, and manually "long press" the on/off button to dimmer for brightness adjust,release your finger when the light intensity changes to the value you want.

- When the brightness is with its maximum value under ON state,long press the ON/OFF button to dim the lights to the minimum value slowly,or release your finger to stop the intensity changing.

- When the brightness is not with its maximum value under ON state,long press the ON/OFF button to lighten the lights to the maximum value slowly.

Enter Smart Life Skill in Alexa APP

Enjoy your smart life of home automation for intelligent control by using our All-in-one mobile App wherever you are in the world or simply by voice control when you are sitting at home comfortably.

1.Complete product networking configuration in the App

Complete the device's networking configuration according to the prompts in the App. Note: In the App, change the name of the device to an easily identifiable name such as Alexa; names are usually in English, such as "bed light".

2.Configure the Amazon Echo device

Note:If you have already configured Amazon Echo, you can skip this step. The following instructions are based on the iOS client.

- Make sure you Amazon Echo device is powered on and connected to a Wi-Fi network.
- Open the Alexa APP on your phone and log in
- tap on the menu in the upper left corner of the Home page, select "Settings" and tap "Set Up A New Device" to set up the Amazon Echo.
- Choose your Amazon Echo device type and language for connecting.
- Press and hold the small dot on the device until the light turns yellow.

- Click "Continue" to connect to the hotspot, connect to the Amazon Echo hotspot, and return to the APP page.

- Click "Continue" to find and connect to your home Wi-Fi network.

- Amazon Echo will take a few minutes to try to connect to the network.

- After the network connection is successful, tap "Continue". An introduction video will appear. After the video ends, tap "Continue" to jump to the Alexa Home page.

- You have now completed the Amazon Echo's configuration process.

3.Key step —— Link Skill

- Tap on "Skills" in the Alexa App menu.
- Then search for "App Name". Tap "Enable" to enable the Skill.
- Enter the App account and password, then tap "Link Now" to link your App account to enable the Skill. Now you can start your smart home journey.

4.Common commands

Control the device via voice commands, now you can control your smart device with Echo. You can control your device (such as your bedroom light) with the following commands:

"Alexa, open the <device name>"
"Alexa, close the <device name>"

SERVICE

- During the free warranty period, if the product breaks down during normal use, we will offer free maintenance for the product.
- Natural disasters/man-made equipment failures, disassembly and repair without the permission of our company, no warranty card, products beyond the free warranty period, etc., are not within the scope of free warranty
- Any commitment (oral or written) made by the third party (including the dealer/service provider) to the user beyond the warranty scope shall be executed by the third party
- Please keep this warranty card to ensure your rights 5.Our company may update or change the products without notice. Please refer to the official website for the updates.

RECYCLING INFORMATION

All products marked with the symbol for separate collection of waste electrical and electronic equipment (WEEE Directive 2012/19 / EU) must be disposed of separately from unsorted municipal waste. To protect your health and the environment, this equipment must be disposed of at designated collection points for electrical and electronic equipment designated by the government or local authorities. Correct disposal and recycling will help prevent potential negative consequences for the environment and human health. To find out where these collection points are and how they work, contact the installer or your local authority.



WARRANTY CARD

Product Information

Product Name_____
Product Type_____
Purchase date_____
Warranty Period_____
Dealer Information_____
Customer's Name_____
Customer Phone_____
Customer Address_____

Maintenance Records

Failure date	Cause Of Issue	Fault Content	Principal