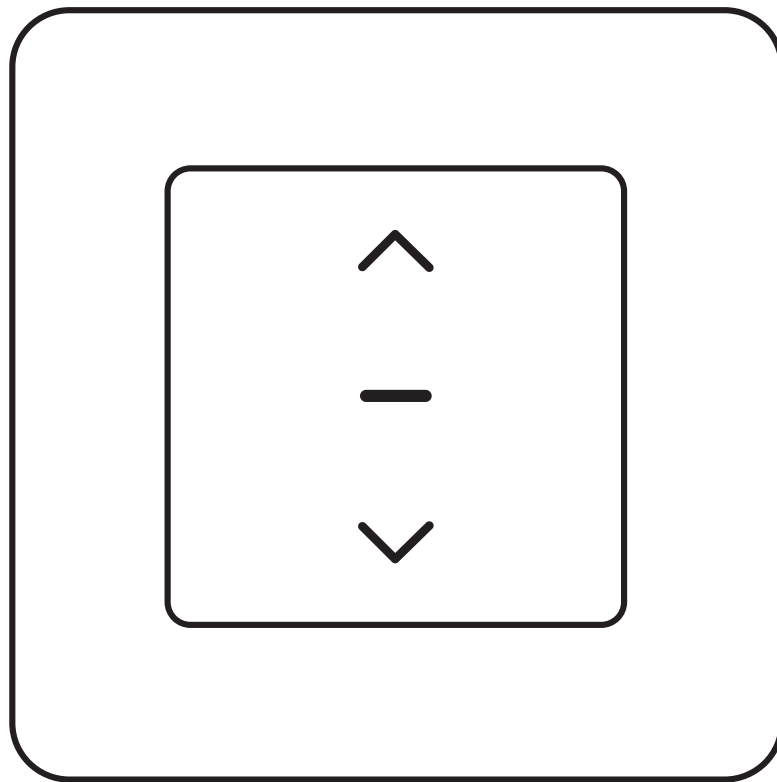


# Instruction Manual

## Curtain Switch



English



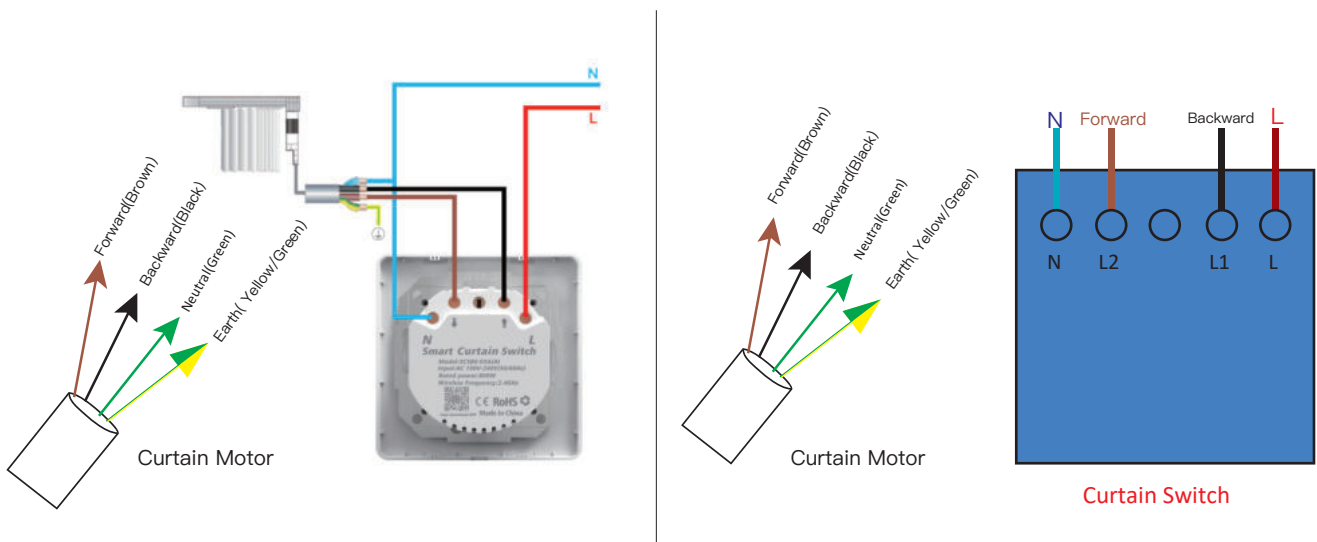
# Safety Information

Risk of Electric Shock: Electricity can cause personal injury and property damage if handled improperly. If you are not sure about any part of these instructions, please seek professional assistance from a qualified electrician.

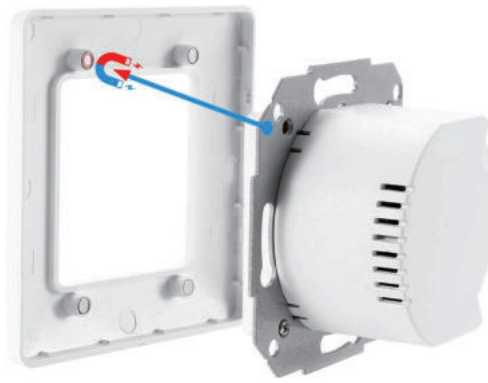
## Product Parameter

*Working Voltage:	AC110–240V(50/60Hz)
*Normal Load power:	≤600W
*Maximum peak current:	10A
*Maximum peak power:	2400W
*Standby consumption:	0.1mA
*Wireless Protocol:	WiFi 2.44 GHz
*Wireless Range:	30 Meter(Indoor)
*Switch Standard:	EU/UK
*Material:	ABS flame retardant

## 1. Wiring Diagram



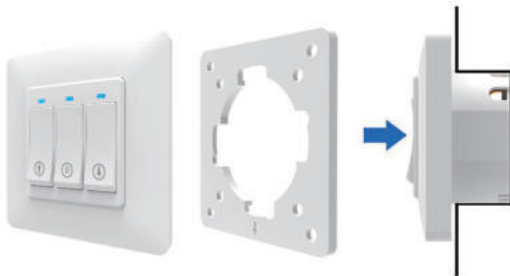
## 2. Installation Method



### Magnet installation

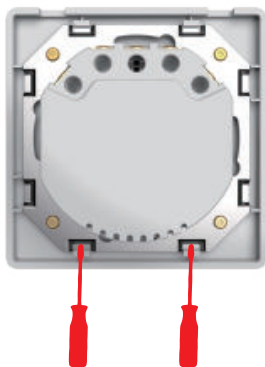


The product frame is the latest generation having an innovative clamping system with magnet. Thus the assembly / disassembly is much more easy to avoid breaking the clamping clips as in the classical models.

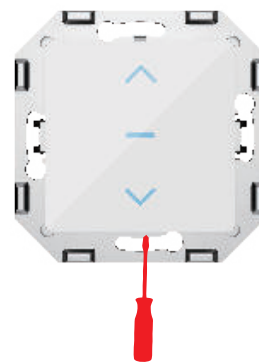


Use a screwdriver to open the left side and then open the right side.

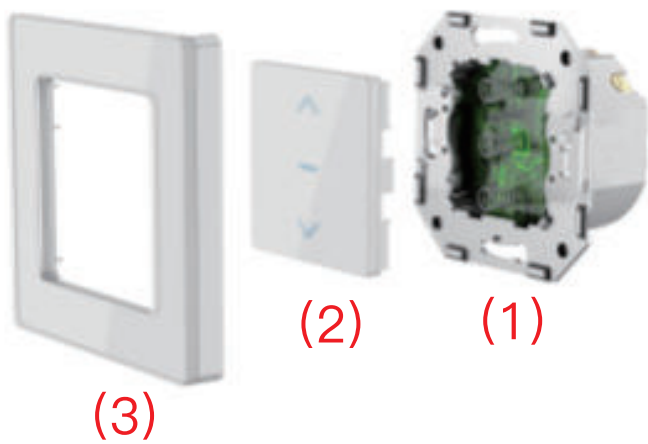
## 3. Touch switch installation method



1. Insert the screwdriver and rotate 90 degrees to open the face frame.

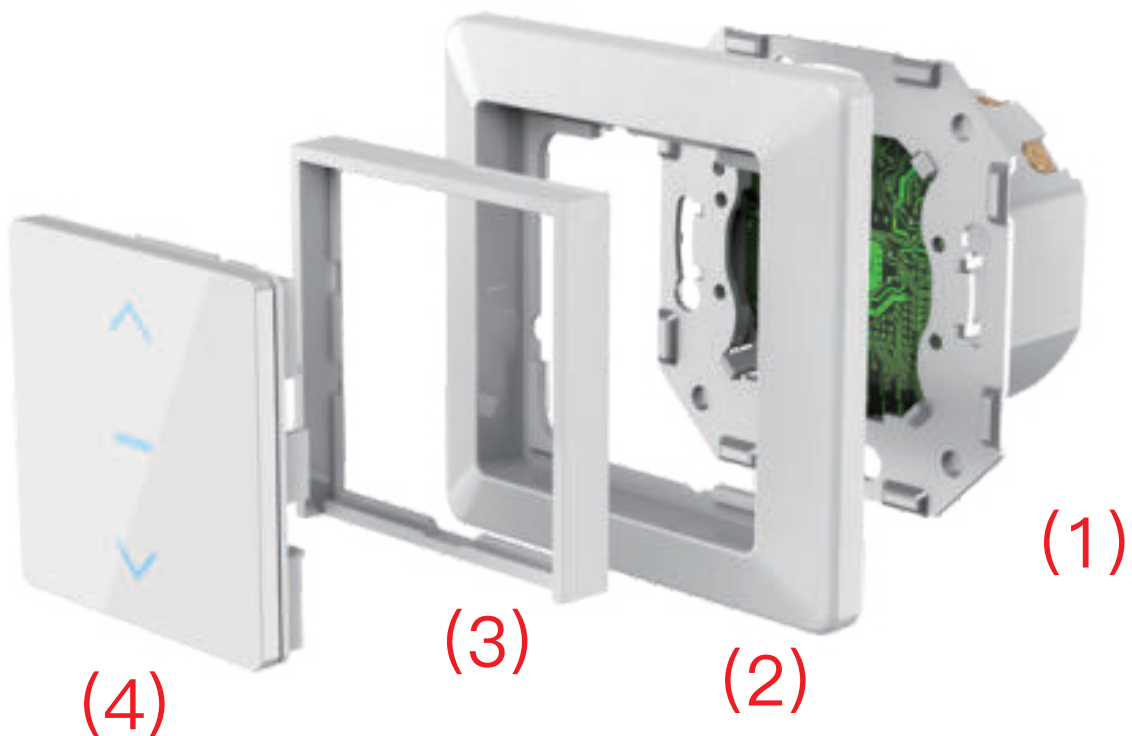


2. Insert the screwdriver to open the small panel.



3. After fixing the back cover, put back on the control panel and the frame.

#### 4. Modified installation method after touch switch



1. Fix the back cover
2. Put on the original switch frame
3. Insert the adapter frame
4. Put on the control panel and the installation is complete

# Safety Information

## 1.APP Download MOES APP



MOES App is upgraded as much more compatibility than Tuya Smart/Smart Life App, functional well for scene controlled by Siri, widget and scene recommendations as the fully new customized service.  
(Note: Tuya Smart/Smart Life App still works, but MOES App is highly recommended)

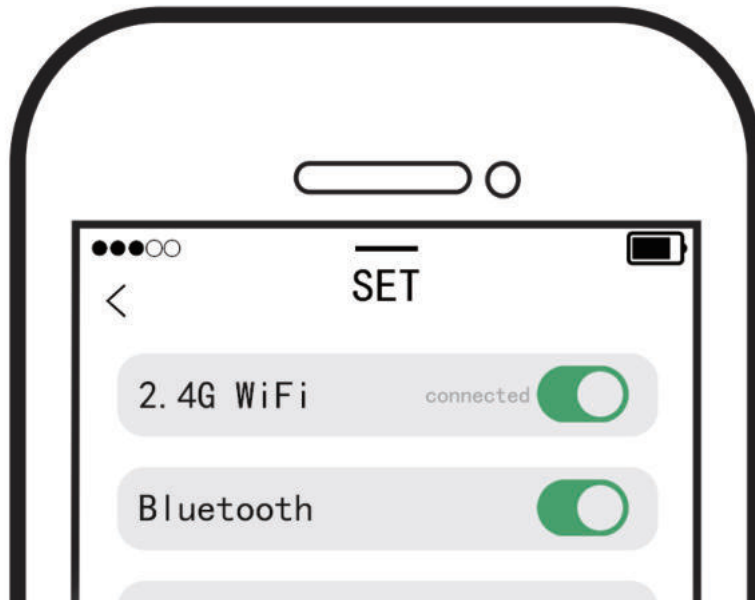
## 2.Register or Log in



Enter the Register/Login interface; tap “Register” to create an account by entering your phone number to get verification code and “Set password”. Choose “Log in” if you already have a **MOES** account.

# Add New WiFi Device

1. Make sure your phone is connected to 2.4G Wi-Fi and the Bluetooth is enabled.



2. Recovery reset method:

- Press the pause button to make sure it is off.
- Press and hold the down key for 20 seconds until the WiFi light is flashing quickly or slowly.



Sure it is off



Press key  
20 seconds

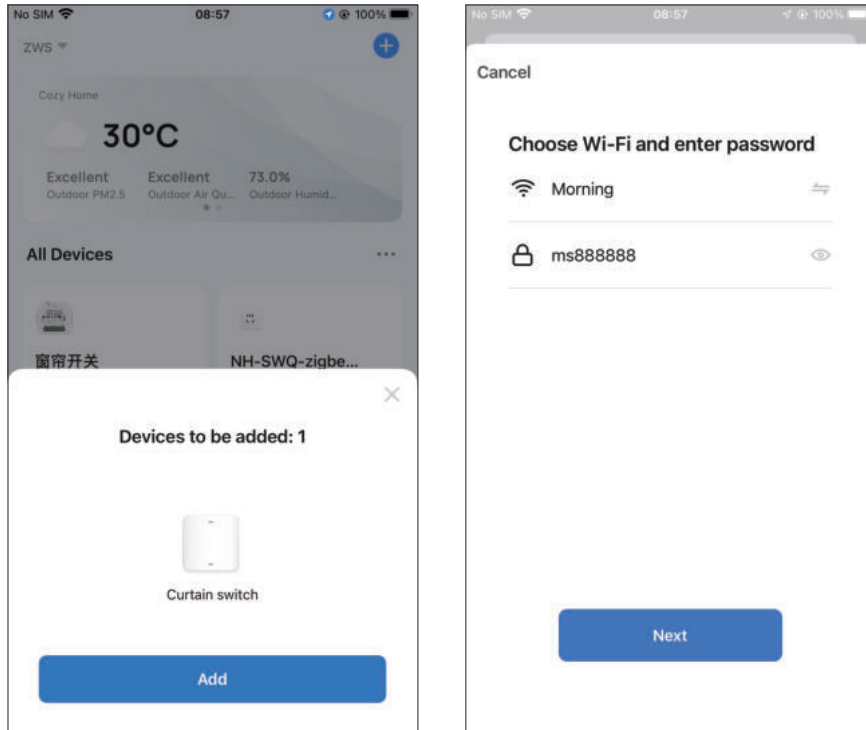


Sure it is off

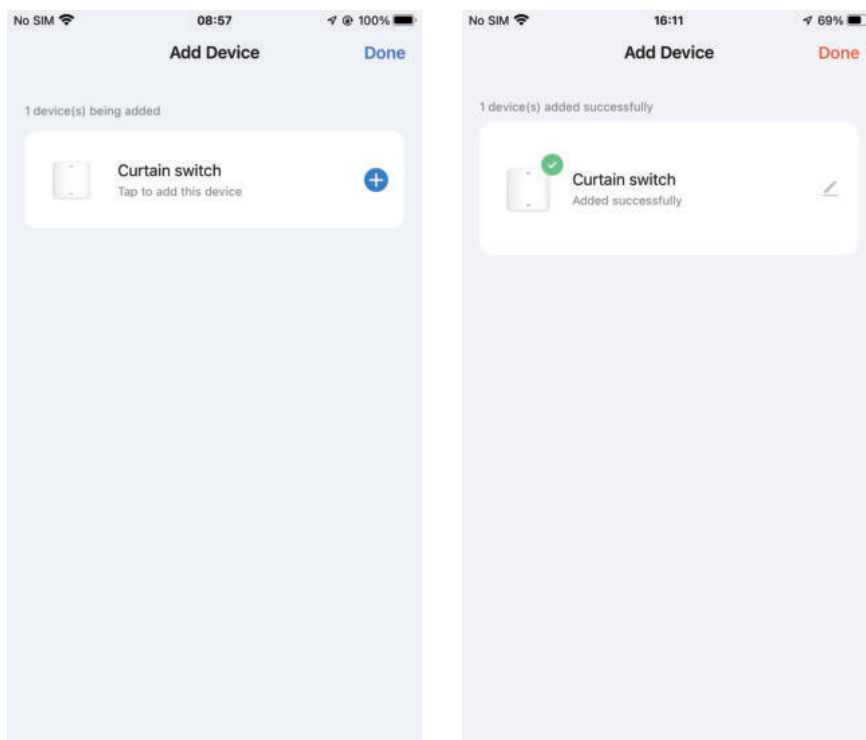


Press key  
20 seconds

3. Open Smart MOES App and Click “+”, then the prompt page will automatically show on the screen. Click “Add”. Enter Wi-Fi Password and click “Next”, waiting for the connection completed.



4. Add the device successfully, you can edit the name of the device to enter the device page by click “Next”.

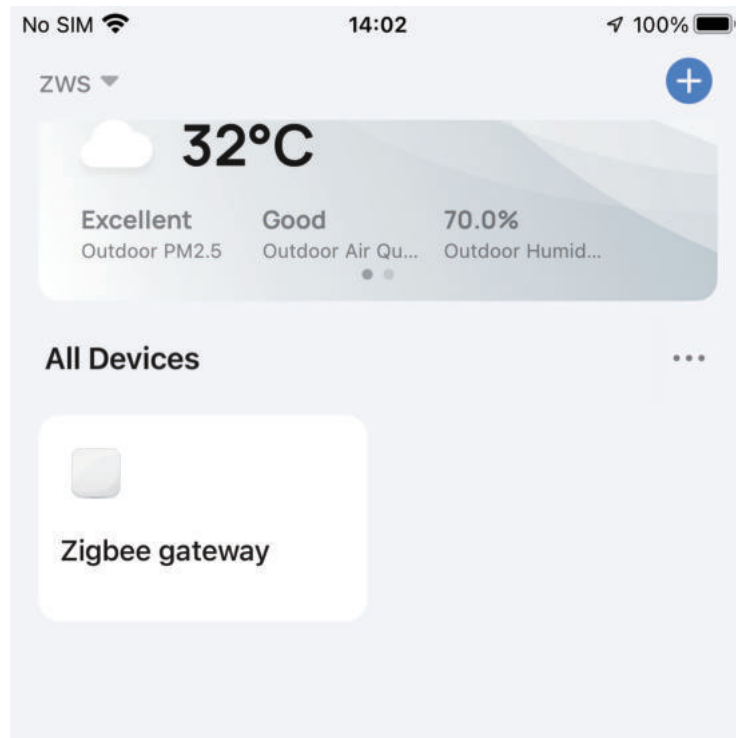


5. Click “Done” to enter the device page to enjoy your smart life with home automation.

# Add New Zigbee Device

Ensure the device is within the effective signal coverage of your smart ZigBee gateway for successful connection into the ZigBee gateway in **MOES APP**.

1. Make sure your MOES APP has successfully connected to a Zigbee gateway.



2. Recovery reset method:

- Press the pause button to make sure it is off.
- Press and hold the down key for 20 seconds until the WiFi light is flashing quickly or slowly.



Sure it is off



Press key 20 seconds

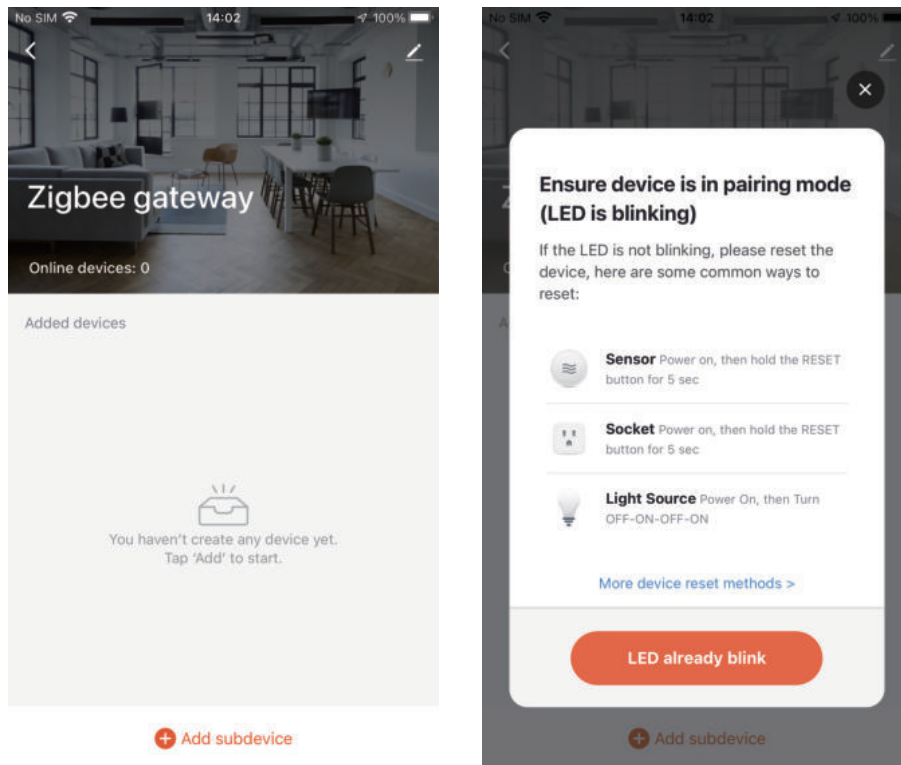


Sure it is off

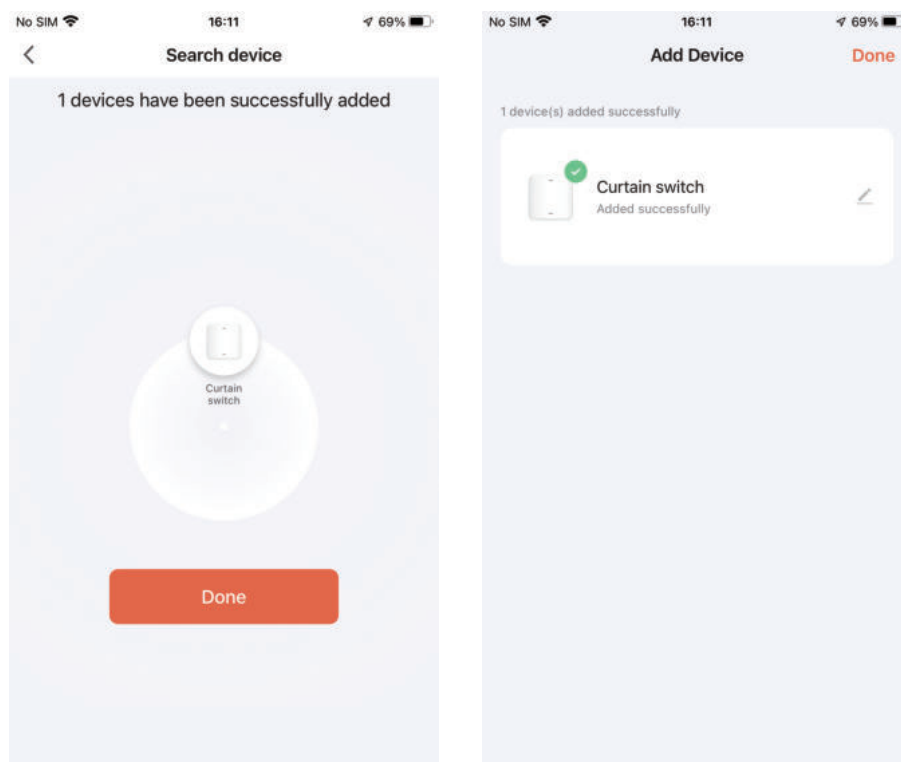


Press key 20 seconds

3. Enter the gateway. Please follow the picture below to finish as “Add subdevice → LED already blink, and the connecting will take about 10–120 seconds to complete depending on your network condition.



4. Add the device successfully, you can edit the name of the device to enter the device page by click “Done”. Click “Done” to enter the device page to enjoy your smart life with home automation.



## Turn on the backlight and turn off the backlight

1. Press and hold the pause button for 6 seconds to turn on the backlight.

2. Press and hold the pause button for 6 seconds to turn off the backlight.



Press 6 seconds Turn on the backlight



Press 6 seconds Turn off the backlight



Press 6 seconds Turn on the backlight



Press 6 seconds Turn off the backlight

## Enter MOES Skill in Alexa APP

### 1. Complete product networking configuration in the App

Complete the device's networking configuration according to the prompts in the App.

**Note:** In the App, change the name of the device to an easily identifiable name such as Alexa; names are usually in English, such as "bed light".

### 2. Configure the Amazon Echo device

(If you have already configured Amazon Echo, you can skip this step. The following instructions are based on the iOS client.)

- ① Make sure you Amazon Echo device is powered on and connected to a Wi-Fi network.
- ② Open the Alexa APP on your phone and log in.
- ③ Tap on the menu in the upper left corner of the Home page, select "Settings" and tap "Set Up A New Device" to set up the Amazon Echo.
- ④ Choose your Amazon Echo device type and language for connecting.
- ⑤ Press and hold the small dot on the device until the light turns yellow.

- ⑥ Click “Continue” to connect to the hotspot, connect to the Amazon Echo hotspot, and return to the APP page.
- ⑦ Click “Continue” to find and connect to your home Wi-Fi network.
- ⑧ Amazon Echo will take a few minutes to try to connect to the network.
- ⑨ After the network connection is successful, tap “Continue”. An introduction video will appear, After the video ends, tap “Continue” to jump to the Alexa Home page.
- ⑩ You have now completed the Amazon Echo’s configuration process

### 3.Key step —— Link Skill

- ① Tap on “Skills” in the Alexa App menu.
- ② Then search for “App Name”. Tap “Enable” to enable the Skill.
- ③ Enter the App account and password, then tap “Link Now” to link your App account to enable the Skill. Now you can start your smart home journey.

### 4.Common commands

Control the device via voice commands, now you can control your smart device with Echo. You can control your device (such as your bedroom light) with the following commands:

**“Alexa, turn on <device name>”**

**“Alexa, turn off <device name>”**

## Storage

Products should be put in the warehouse where the temperature is between the range  $-5\sim 50^{\circ}\text{C}$ , and the relative humidity  $\leq 70\%$  RH, indoor environment with no acid, alkali, salt and corrosive, explosive gas, flammable matter, protected from dust, rain and snow.

## SERVICE

Thank you for your trust and support to our products, we will provide you with a two-year worry-free after-sales service (freight is not included), please do not alter this warranty service card, to safeguard your legitimate rights and interests. If you need service or have any questions, please consult the distributor or contact us.

Product quality problems occur within 24 months from the date of receipt, please prepare the product and the packaging, applying for after-sales maintenance in the site or store where you purchase; If the product is damaged due to personal reasons, a certain amount of maintenance fee shall be charged for repair.

We have the right to refuse to provide warranty service if:

1. Products with damaged appearance, missing LOGO or beyond the service term
2. Products that are disassembled, injured, privately repaired, modified or have missing parts
3. The circuit is burned or the data cable or power interface is damaged
4. Products damaged by foreign matter intrusion (including but not limited to various forms of fluid, sand, dust, soot, etc.)

## RECYCLING INFORMATION

All products marked with the symbol for separate collection of waste electrical and electronic equipment (WEEE Directive 2012/19 / EU) must be disposed of separately from unsorted municipal waste. To protect your health and the environment, this equipment must be disposed of at designated collection points for electrical and electronic equipment designated by the government or local authorities. Correct disposal and recycling will help prevent potential negative consequences for the environment and human health. To find out where these collection points are and how they work, contact the installer or your local authority.



# WARRANTY CARD

## Product Information

Product Name\_\_\_\_\_

Product Type\_\_\_\_\_

Purchase Date\_\_\_\_\_

Warranty Period\_\_\_\_\_

Dealer Information\_\_\_\_\_

Customer's Name\_\_\_\_\_

Customer Phone\_\_\_\_\_

Customer Address\_\_\_\_\_

## Maintenance Records

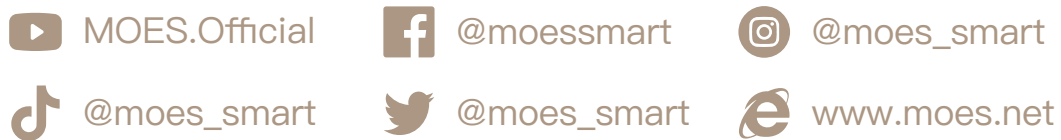
Failure date	Cause Of Issue	Fault Content	Principal

Thank you for your support and purchase at we Moes, we are always here for your complete satisfaction, just feel free to share your great shopping experience with us.



If you have any other need, please do not hesitate to contact us first, we will try to meet your demand.

## FOLLOW US



### **UK REP** EVATOST CONSULTING LTD

Address: Suite 11, First Floor, Moy Road Business Centre, Taffs Well, Cardiff, Wales, CF15 7QR  
Tel: +44-292-1680945  
Email: [contact@evatmaster.com](mailto:contact@evatmaster.com)

### **EC REP** AMZLAB GmbH

Laubenhof 23, 45326 Essen  
Made In China



### **Manufacturer:**

#### WENZHOU NOVA NEW ENERGY CO.,LTD

Address: Power Science and Technology Innovation Center, NO.238, Wei 11 Road, Yueqing Economic Development Zone, Yueqing, Zhejiang, China

Tel: +86-577-57186815

After-sale Service: [service@moeshouse.com](mailto:service@moeshouse.com)